



## 1600 CONTINUOUS ROTARY STEAM TUBE DRYER



**PROCESS**—The ANCO® model 1600 Rotary Steam Tube Dryer is designed specially to dry poultry feathers, blood and hog hair. When used in conjunction with traditional ANCO Batch Cookers and Continuous Hydrolyzers, customers will save in production time, steam demand and electrical consumption. The Dryer is well suited for other types of free flowing /granular materials such as chemicals, brewery waste and minerals. Its compact design makes it an easy and efficient way to upgrade from older evaporation equipment. For example the 1600 Dryer takes up about the same floor space as an older style unit while providing almost double the heat transfer area.

**AUTOMATION**—Combining electronic speed control of the Dryer infeed and discharge with temperature, pressure and load sensors optimum performance can be achieved. For higher levels of safety and automation the various monitoring points can be upgraded into a PLC system.

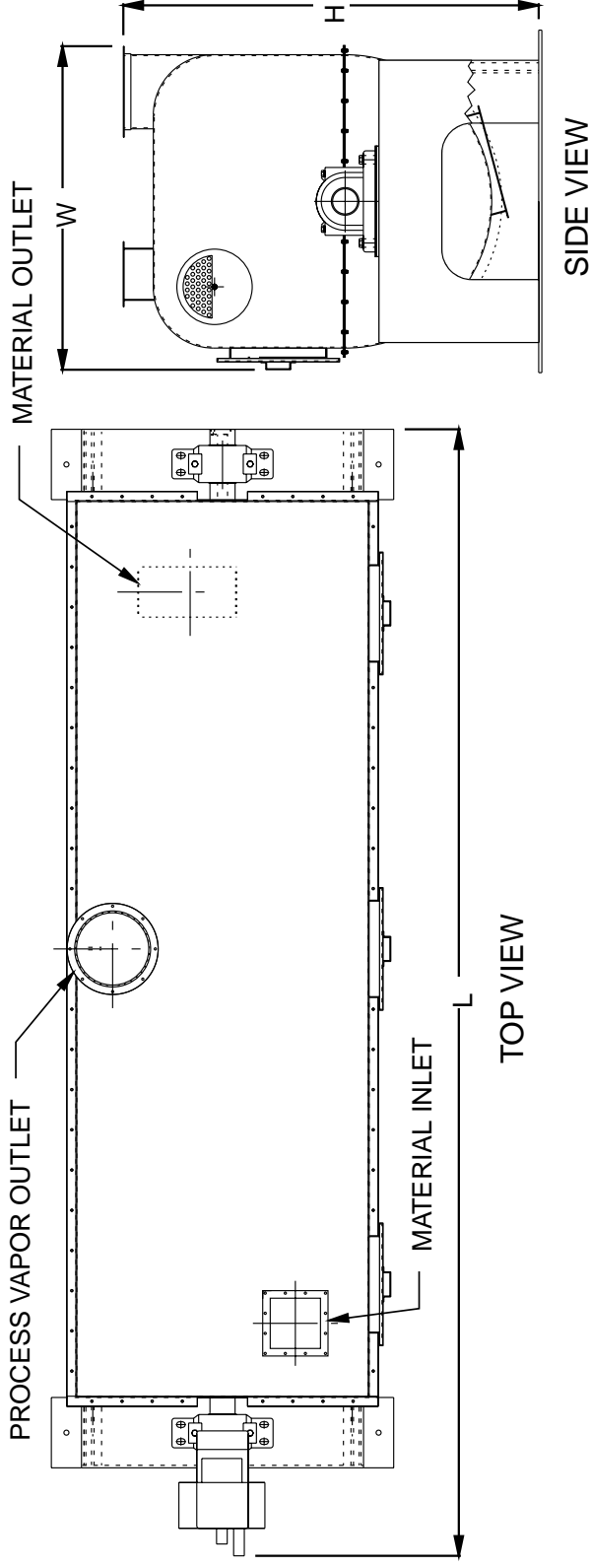
**DESIGN**—The model 1600 Dryer consists of multiple steam tubes arranged in a rotating tube bundle. The steam tubes are permanently attached to the rotating head and are permitted to expand and contract with temperature changes. Steam is sent through a special rotating steam joint to a rotating head and then into the tubes. Heat is exchanged between the steam tubes and the wet product causing moisture to evaporate and the steam to condense. Condensate drains back through the tubes into special collection chambers in the rotating head and passes out through the rotating steam joint back to the steam boiler system.

**VAPOR CONDENSING- ANCO-EAGLIN** can provide a variety of options for condensing the process vapors produced by the 1600 Dryer. The choices include:

- Direct Contact Condenser
- Indirect Heat Recovery Condenser
- Fin Air Cooled

(See reverse page)

# Specifications: 1600 Continuous Rotary Steam Tube Dryer



MODEL NO.	HEATING SURFACE		MOTOR		L		W		H		APPROX. SHIPPING WT.	
	FT. <sup>2</sup>	M <sup>2</sup>	HP.	KW.	FT.	M	FT.	M	FT.	M	LB.	KG.
1600-4	400	37	7.5	5.6	18.5	5.6	5.4	1.6	7.0	2.1	13,500	6,100
1600-6	600	56	7.5	5.6	18.5	5.6	5.4	1.6	7.0	2.1	15,000	6,800
1600-8	800	74	10	7.5	22.3	6.8	5.4	1.6	7.0	2.1	19,000	8,600

## STANDARD FEATURES

- 125 PSIG pressure rating for the rotating tube bundle.
- Construction to ASME Code Section VII Division 1.
- Greater heat transfer surface area and surface area flexibility.
- Special diameter stainless steel steam tubes with increased spacing reduces clogging from unwanted debris.

- Heavy-duty cold rolled shaft attached to SKF bearings for support rotating tube bundle.
- Shell housing and sturdy product scooping plates fabricated from stainless steel.
- Shaft mounted gearbox designed expressly for high durability.

Contact **ANCO-EAGLIN** for information about processing capacity and steam consumption for a particular drying application. The seller makes no warranties, express or implied including but not limited to the implied warranties of the merchantability and fitness for a particular purpose except expressly stated in seller's contact or sales acknowledgement form.

**ANCO-EAGLIN, Inc.**

120 North Chimney Rock Road • Greensboro, North Carolina 27409  
 336-855-7800 • FAX 855-7831 • e mail: [ancoeaglin@aol.com](mailto:ancoeaglin@aol.com)  
[www.ancoeaglin.com](http://www.ancoeaglin.com)