

The 1212 Hydrolyzer

by ANCO-EAGLIN



ANCO-EAGLIN: Built On Innovation

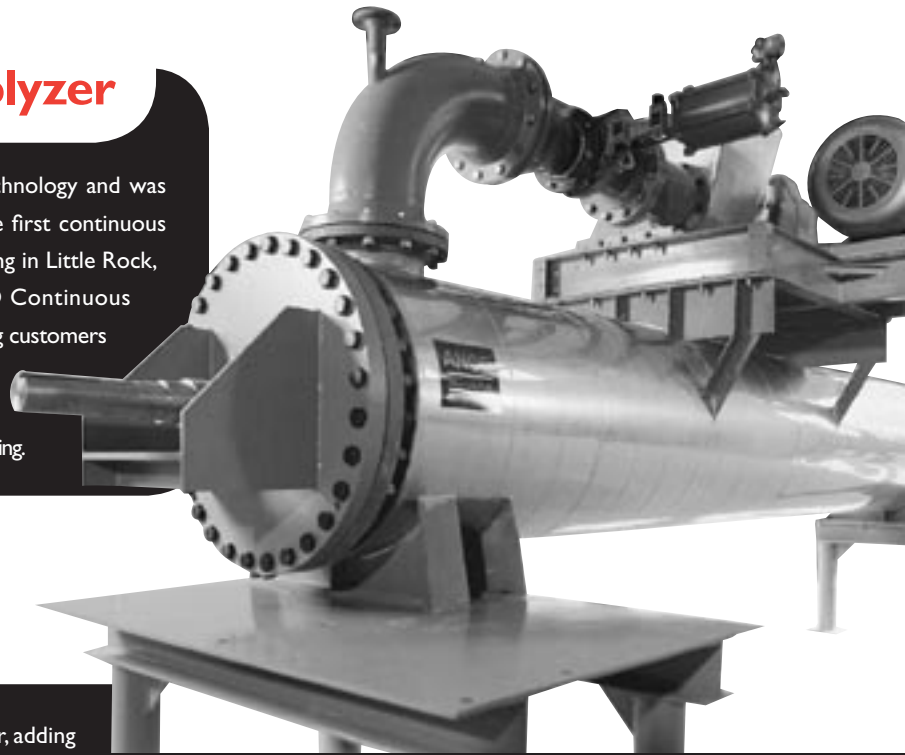
ANCO-EAGLIN was originally founded in October 1902 as The Allbright-Nell Company, a producer of cottonseed oil/beef fat/stearine compounds. By the 1920s, the company, now known as ANCO, expanded its line to include soap-making and canning equipment and varometric condensers. Over the next several decades, ANCO continued its emphasis on automated innovations for the rendering industry, including the first complete resin depilatory system, the bacon press, the hydramatic slicer, automated blow tank systems and hydraulic piston-type pumps for batch cookers and the continuous hydrolyzer. ANCO also made great strides in improving the efficiency of systems governing air and water pollution control and heat recovery.

In August of 1993, we purchased the ANCO® equipment line, which had been owned by two other companies since 1977, and reformed under the name ANCO-EAGLIN, Inc. in Greensboro, North Carolina. Since then, we have increased the number of cookers, introduced a newly designed crax-press, increased our inventory of ANCO-related replacement parts and doubled the size and production capabilities of our Greensboro manufacturing facility. Today, ANCO-EAGLIN's primary goal is to provide you with superior quality, service and workmanship.

The **1212** Hydrolyzer

The History of the Hydrolyzer

ANCO originated continuous hydrolyzer technology and was the first company to patent the process. The first continuous hydrolyzer was installed at Southern Rendering in Little Rock, Arkansas, in the mid-1960s. Today, ANCO Continuous Hydrolyzers are a preferred choice of rendering customers throughout the world. With slight modifications, the ANCO Continuous Hydrolyzer can also be used for waste sterilization and corn-stalk processing.



ANCO 1212 Continuous Hydrolyzer

ANCO-EAGLIN has continued to innovate its 1212 Hydrolyzer, adding components designed to offer a variety of new and improved features:

- Processes chicken and turkey feathers and hog and beef hair
- Consumes one pound of steam for every three pounds of raw material
- Discharges feather moisture content in the 59±% range
- Raises product quality and protein digestibility due to the rapid heating and short resonance time inside the vessel
- Available in several production sizes ranging from 3,000 to more than 30,000 pounds per hour

Pressure Vessel

- Consists of a heavy wall inner shell constructed from stainless steel
- Produces higher ASME pressure ratings (125 psig. inner shell; 150 psig. jacket pressure with EC and CRN certifications)
- Features an energy-efficient insulation jacket consisting of high R-value wrapping covered by a stainless-steel sheet
- Generates substantial savings in steam use with minimal heat loss



ANCO-EAGLIN, Inc. 120 North Chimney Rock Road • Gree

336-855-7800

Touch Screen Control Panel

ANCO can provide additional PLC integration and optional, state-of-the-art Touch Screen technology:

- Easily integrates with all major brands of PLC's including Allen-Bradley, Modicon and many others
- Features an Ethernet connection which allows the manager or key personnel to monitor the system via an IP web address



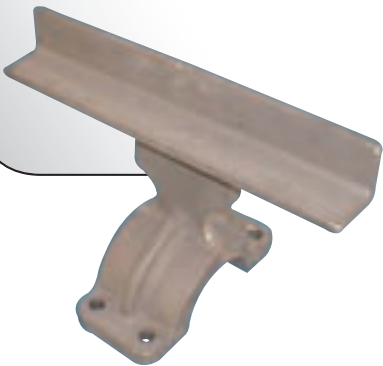
New Infeed Gearbox

- Upgraded to handle double the thrust-carrying load
- Increases torque by 50%
- Now available with an optional oil filtration system for use in certain plant environments



New Agitation Paddles

- Contain no welds, which helps reduce weld-fractures
- Incorporates stainless-steel paddle shafts, which provides greater durability than hollow, welded-shaft designs



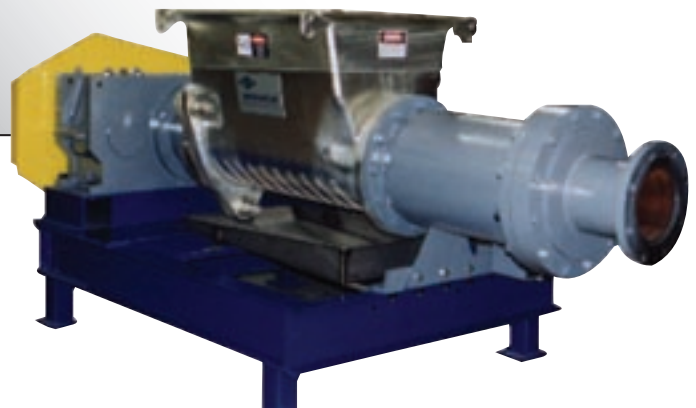
Spare Parts

Original ANCO stock parts are essential to maintaining operational peak performance. ANCO-EAGLIN is committed to providing our customers with the highest quality equipment and services. Our new Greensboro, North Carolina manufacturing facility stocks more than a half-million dollars in replacement parts for related ANCO® equipment.

New Feeder System

- Available in top and bottom charging positions*
- Various floor level arrangements — makes installation simpler and faster
- Newly designed plug formation tube and bottom charging — assures consistent feeding with less steam leakage and product blow back

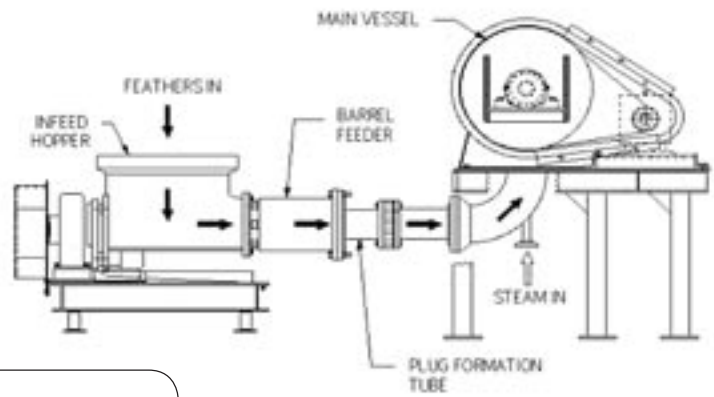
* See position diagrams on back panel



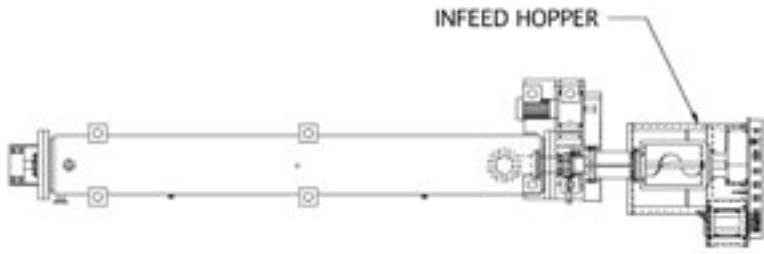
ANCO
Est. 1902

1212 Feeder Positions

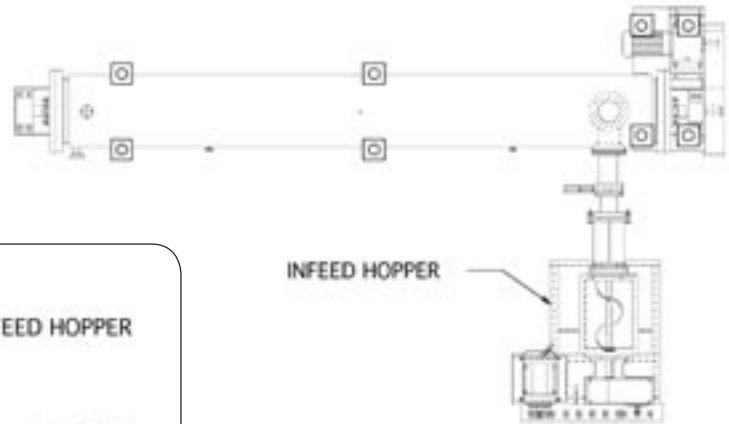
Infeed at bottom position



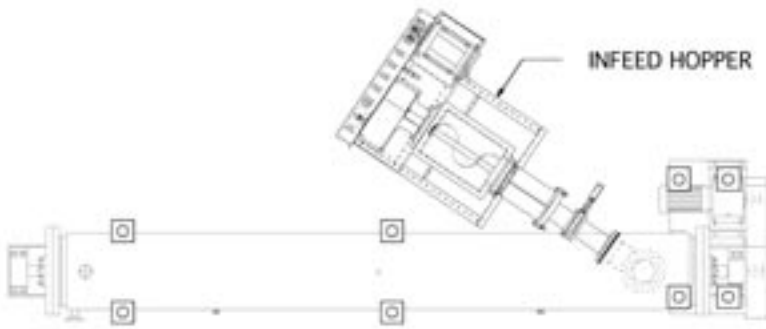
Feeder position 1



Feeder position 2



Feeder position 3



1212 Continuous Hydrolyzer Specifications

Model	Capacity PPH/KGPH	H FT/M	L1 FT/M	L2 FT/M	W FT/M	Weight LBS/KGS	Horsepower Feeder/Agitator
1212-05	5,000/2,268	10/3.0	12/3.7	20/6.1	7/2.1	18,000/8,165	40/15
1212-10	10,000/4,536	10/3.0	16/4.9	24/7.3	7/2.1	22,000/12,700	50/15
1212-15	15,000/6,804	10/3.0	16/4.9	25/7.6	8/2.5	28,000/12,700	60/20
1212-30	30,000/13,608	12/3.7	20/6.1	30/9.1	9/2.7	39,000	125/30

ANCO-EAGLIN, Inc.

120 North Chimney Rock Road • Greensboro, North Carolina 27409

336-855-7800 • FAX 336-855-7831 • E-mail: ANCOEAGLIN@AOL.COM • WWW.ANCOEAGLIN.COM